



CyberSecure IPS Universal Cyber Sensors™

Powerless Fiber Optic Sensors For Cyber-Physical Protection

With an array of form factors, these sensors are the ideal Cyber-Physical Security solution for protecting any critical infrastructure or asset because they require no power or battery and are ruggedized for harsh conditions.

The CyberSecure IPS philosophy of Defense-In-Depth means we believe in protecting all aspects of infrastructure security. Our Universal Cyber Sensors™ were designed with the stealthiest of intruders in mind. Hence, our portfolio of sensors have numerous applications to protect critical access points such as manholes, handholes, NEMA enclosures, server cabinet doors and even floor tiles on a raised floor. The sensors are unobtrusive, immune to Electronic Magnetic Interference (EMI), and virtually impossible to circumvent. The Universal Cyber Sensors™ are managed by the CyberSecure IMS™

platform. With IMS™ providing the monitoring engine, these sensors can provide a level of security intelligence and granularity of data unavailable in the Cyber-Physical Security industry today. Dramatically increase the level of awareness and security posture by deploying our Cyber Sensors managed with all the smart features built into the CyberSecure IMS™ application.

The Cyber Sensor solution is not only relevant to IT cyber security, but also has powerful applications to the OT cyber security arena as well. With greater attention being thrust upon the issue of industrial espionage and the vulnerability of ICS systems, the relevance of our Cyber Sensor technology has become more apparent.

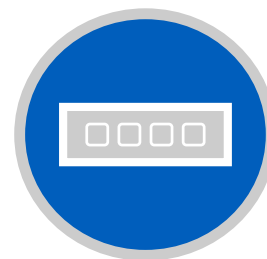
Sensor Highlights:

- ▶ Measures open/close, dB loss, and temperature
- ▶ Field sensors require no electricity
- ▶ Ruggedized for rough climates: operating temperature is -40°F to 176°F
- ▶ IP68 Rated-can function under water



CyberSecure IPS Cyber Sensor Controller

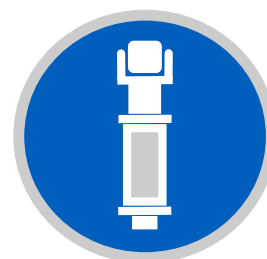
All of our Cyber Sensors are connected to and sensing data collected by The Cyber Sensor Controller™ (CSC). The CSC employs full spectral scanning and data acquisition, providing measurements with high absolute accuracy. The controller and sensors are monitored and managed by CyberSecure IMS™ (Infrastructure Monitoring System). The CSC provides connectivity to the first sensor in every sensor string, continuously monitors open/close conditions, fiber loss (dB), fiber cuts, and can optionally measure the temperature at each sensor location. The CSC provides IP connectivity to the CyberSecure™ IMS server which allows for global management of multiple locations simultaneously.



- ▶ 1Ch, 4Ch, 8Ch, and 16 channels
- ▶ Up to 35dB dynamic range
- ▶ Up to 50 sensors per fiber

CyberSecure IPS Manhole Sensor

The Universal Manhole sensors contain no electronic components, require no electrical power, and emit no signals. Due to their optical design the Universal Cyber Sensors™ utilize a single strand of standard single-mode fiber (SMF) and are inherently immune to electromagnetic and radio frequency interference. They are IP68 rated, functions under water, and can operate in -40°F to 176°F temperatures.



- ▶ Measures Open/Close, dB Loss, Temp.
- ▶ Universal Mounting Bracket
- ▶ IP68 rated

CyberSecure IPS Lockbox/Cabinet Door Sensor

The Universal Lockbox/Cabinet Door sensors are completely passive and powerless-designed to monitor critical access points on the network. Use them to monitor the status of open/close conditions, measure the change in signal levels and temperature points at the location. These fiber optic sensors can be used for cage doors, cabinet doors, user desktop boxes (UDBs), zone distribution boxes, and any other access points vulnerable to intrusion in an unprotected network or secure facility.

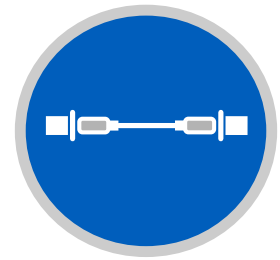


- ▶ Measures Open/Close, dB Loss, Temp.
- ▶ Adjustable Bracket
- ▶ Small form factor



CyberSecure IPS Universal Floor Sensor

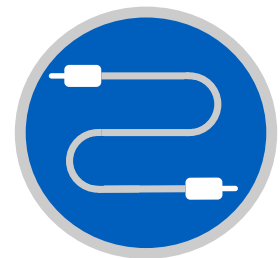
The Universal Floor Sensor has been designed to detect the proximity of an intruder standing or moving within a data center cage or any secure area with a raised floor. This sensor is ideal for remote locations that are unmanned. With strategic placement of these sensors, security teams can greatly enhance their level of situational awareness well beyond what traditional video surveillance can provide and drastically reduce countless hours of staring at video monitors.



- ▶ Measures Tension & Strain
- ▶ Not visible to intruders
- ▶ See movement in real time

CyberSecure IPS Cage Wall Sensor

The Universal Cage Wall sensors measure for signal changes due to vibration or movement to a monitored cage area or zone. The cage sensor comes inside of a jacketed sensing cable and mounted to the interior surface of the protective cage around the data center assets. Individual sensors are spaced to monitoring points on the cage.

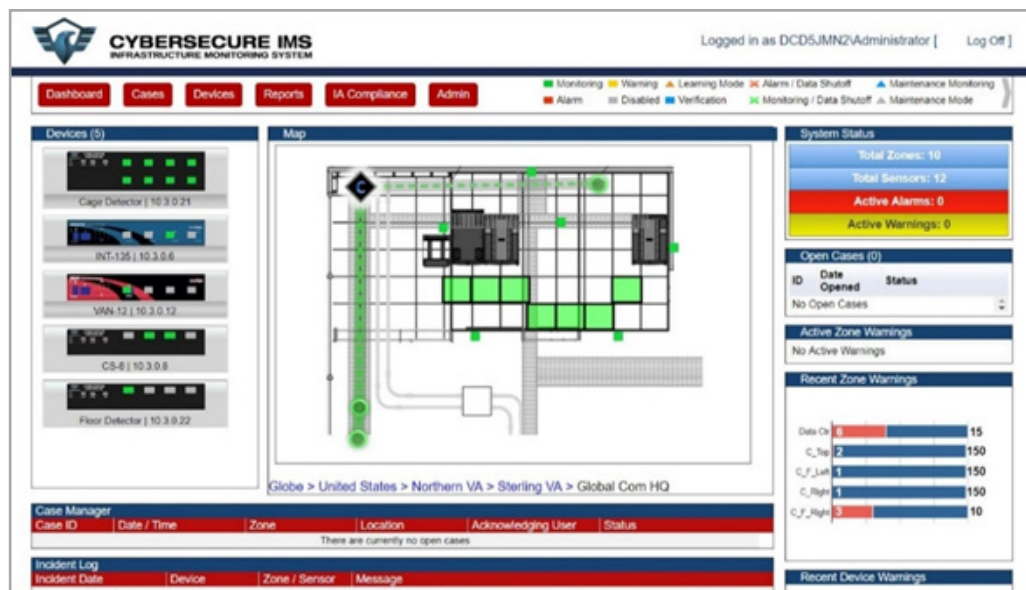


- ▶ Measures Vibration & Movement
- ▶ Flexible & easy to install
- ▶ Single Mode fiber cable

CyberSecure IMS™

The CyberSecure IPS Universal Cyber Sensors™ are monitored and managed by the CyberSecure IMS™ software platform. Feature rich capabilities will provide every security team the ability to receive real-time notifications, log every warning or alert, and immediately dispatch security personnel armed with the data they need to safely address the issue. With extensive integration capability to seamlessly blend into any network monitoring system, IMS™ allows ease of use with a user friendly dashboard.

Specific to Government compliance, the IMS™ software was designed to meet the rigorous requirements for CNSSI 7003 and to ensure a 100% passing rate for CCRI audits. **CyberSecure IMS is the only software solution that has been granted a Certificate of Networkiness from NETCOM and also facilitates site-specific Risk Management Framework (RMF)**



CyberSecure IMS™ Console

Fiber Forensics™

captures characteristics of real-time intrusion attempts and displays a graphical representation of every optical disturbance as it occurs. Optical signatures are tracked depending on the severity providing valuable intelligence including time stamp, dB loss, number of occurrences, and the duration of the event.

Just Press Play™ (JPP)

This rapid troubleshooting feature is like having a “DVR-like” capability that significantly reduces the time needed to troubleshoot or investigate an outage or incident. The IMS software logs and stores every warning or alarm that is triggered. Administrators can then go back to any point in time to play back the events that had occurred on the console viewer.

Additional IMS™ Features Include:

- ▶ Case Management w/Integrated SOPs
- ▶ CyberSecure IMS Zonar with Eagle Eye Active Alert Intruder Alert System™
- ▶ Integrated Alarm Dispatching
- ▶ Optical Intrusion Warning Notification